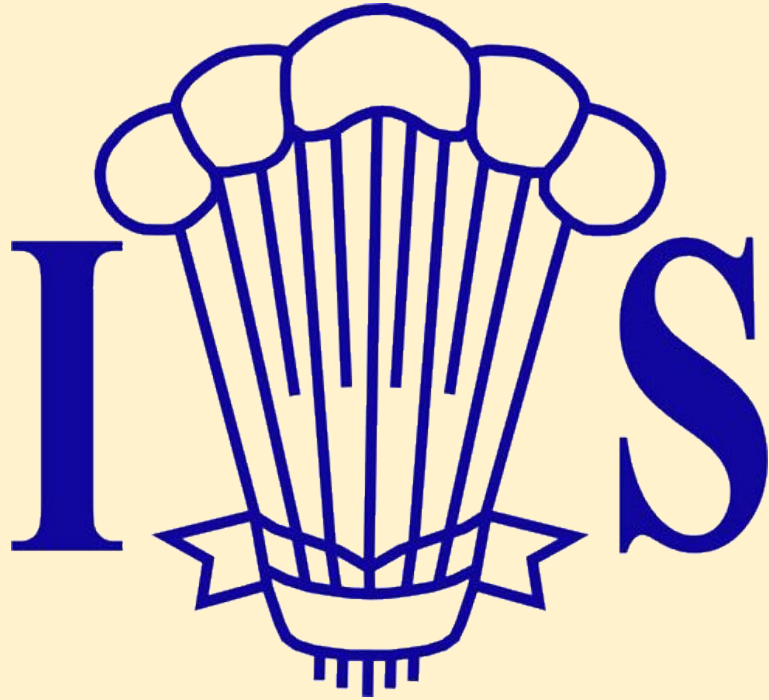


Year 6 Transition 2026

Strive
Support
Succeed





Tutor Presentation

Strive
Support
Succeed





What does it feel like to be an Imberhorne student?

Strive
Support
Succeed



"This year has been great, I've made loads of new friends"

"Making friends is easy at Imberhorne"

"My Form teacher is amazing. She helps me in the morning, she checks all my lessons and tells me important notices that I would forget!"

"I was really nervous before I came to school. However I managed to make new friends quickly and I am loving it."

"Lessons are really interesting - I am learning so much!"

"When I joined I was shy, now I feel more confident and happy in class."

"The teachers are really nice and want to help you."

"I love coming to Imberhorne, it's great."

Role of the tutor

- ❑ First Point of contact
- ❑ Overview of each tutee
- ❑ Maintain pride in uniform, punctuality, attendance and merits
- ❑ Personal Development Curriculum - 'Life Lessons'

Communication

Why Communication Matters:

- Keeps school and home connected
- Ensures important information is shared clearly
- Helps us support your wellbeing and success

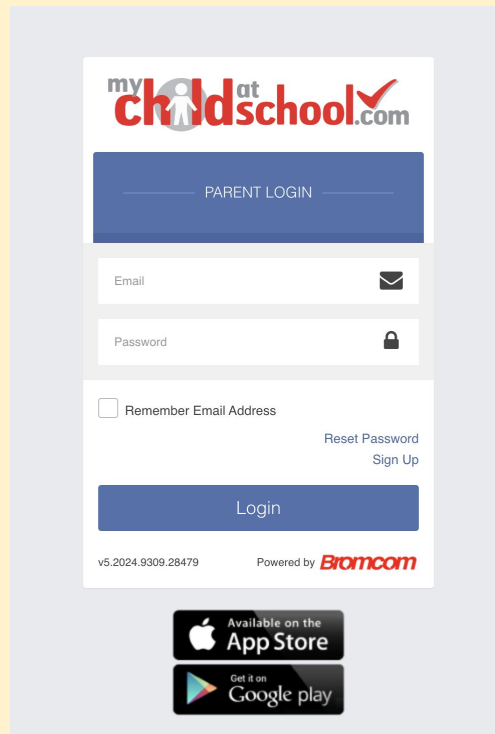
How to Contact School:

- Phone call
- Written note
- Email

When to Get in Touch:

- If you're child is unwell or absent
- If you have an appointment
- If there's something important happening at home we should know

Bromcom: MyChildatSchool



The screenshot shows the 'my child at school.com' login interface. It features a 'PARENT LOGIN' header, input fields for 'Email' and 'Password', a 'Remember Email Address' checkbox, and links for 'Reset Password' and 'Sign Up'. A blue 'Login' button is at the bottom. The footer includes the version 'v5.2024.9309.28479', 'Powered by Bromcom', and app store availability for the App Store and Google Play.

my child at school.com

PARENT LOGIN

Email

Password

☐ Remember Email Address

[Reset Password](#)
[Sign Up](#)

Login

v5.2024.9309.28479 Powered by **Bromcom**

Available on the App Store

Get it on Google play

Strive
Support
Succeed



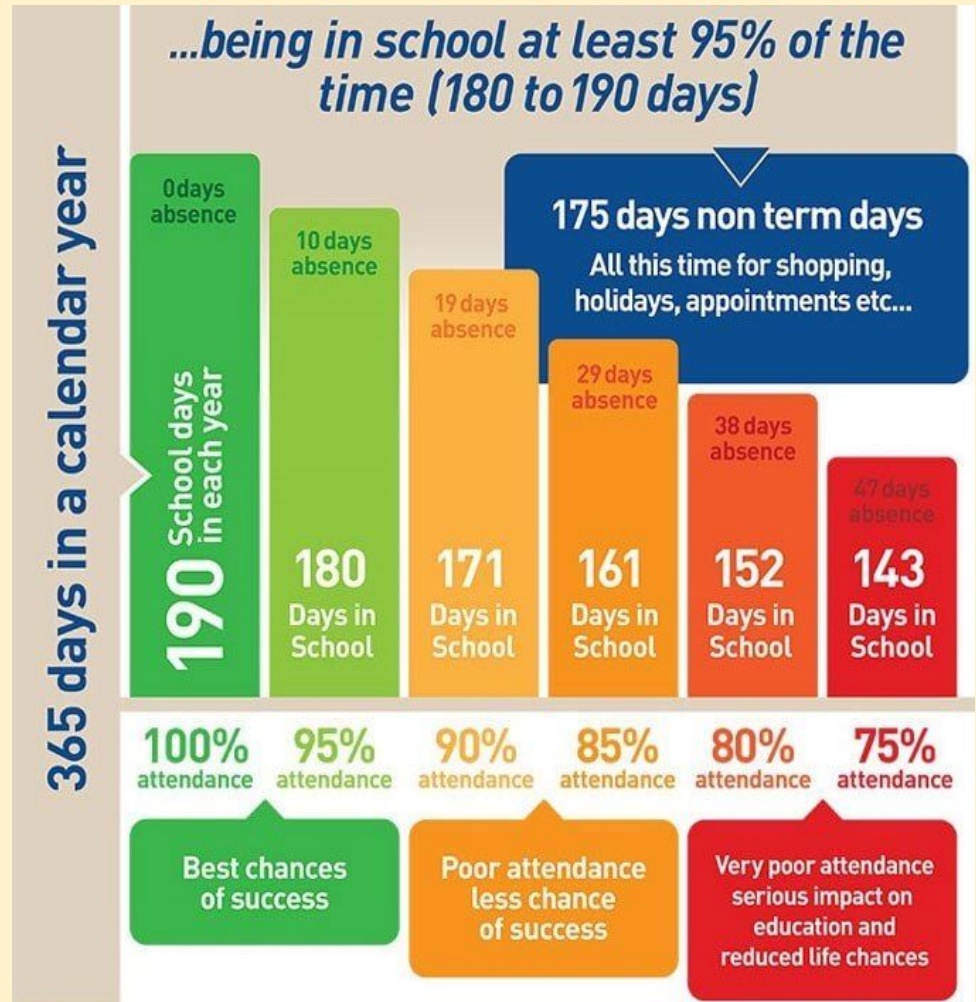
Bromcom: MyChildatSchool

Bromcom is the system the school uses to store important in-school information

As a parent, you can access Bromcom to see the following information

- Merits
- Behaviour incidents/sanctions/detentions
- Registers/Timetables
- Attendance
- Homework
- Reports

Attendance





Attendance

- ❑ Good attendance is being in school 95% of the time
- ❑ Attendance = Attainment
- ❑ Ensure that your child comes into school every day on time
- ❑ Minor ailments - it's OK to send your child to school if they are feeling a little bit poorly. They will probably feel better once they get here
- ❑ Try to make all medical appointments after school if you can
- ❑ If you or your child are worried about ABSOLUTELY ANYTHING at school please tell someone. There is never a problem that someone can't help with.
- ❑ Please call the absence line to let school staff know.



Rewards and Recognition

- ❑ Merits
- ❑ Value Awards
- ❑ Praise Emails
- ❑ Imberstar Nominations
- ❑ Subject Awards
- ❑ Headteacher Awards

HOW WE RECOGNISE EXCELLENCE			
Merit Awards 	Core Values 	Email Home 	Imber Star 
<p>Merit for Aiming High and Showing Effort</p> <p>Merit for Creativity</p> <p>Merit for Leadership</p> <p>Merit for Listening</p> <p>Merit for Problem Solving</p> <p>Merit for Speaking Skills</p> <p>Merit for Staying Positive</p> <p>Merit for Teamwork</p> <p>Merit for Weekly Attendance</p> <p>Merit for Weekly Behaviour</p> <p>Merit for Weekly Punctuality</p>	<p>Achievement Taking responsibility for your own learning</p> <p>Compassion Supporting others in and out of lessons</p> <p>Endeavour Embracing challenge to produce work above expectation</p> <p>Random Act of Kindness Putting someone else first</p> <p>Respect The highest standard of behaviour and conduct</p> <p>Role Model to Other Students School Representation</p>	<p>Praise E-mail</p> <p>Praise E-mail: Outstanding Effort on today's lesson</p> <p>Praise E-mail: Outstanding Practical Work</p> <p>Praise E-mail: Worked really hard for an Assessment</p>	<p>Imberstar</p>
1 POINT	2 POINTS	3 POINTS	5 POINTS
  IMBERHORNE SCHOOL			

**Strive
Support
Succeed**



Behaviour and Routines

Imberhorne Behaviour Consequences	
GRADUATED RESPONSE	SANCTION
PREVENT	No Sanction Issued
REMIND	B1 Logged - Class Teacher
CAUTION	B2 Logged - Class Teacher • 20 Minute detention the following day
ON-CALL	B3 Logged - Class Teacher • 1 Hour Detention after school • Failure to attend will result in a day in the Bridge with parental meeting
<p>If there is a serious breach of the behaviour policy a student can be On-called immediately.</p> <p>Serious breaches include incidents such as violence, swearing at a member of staff or student, doing something that puts others in danger, use of discriminatory and highly offensive language, etc</p> <p>Sanctions are non-negotiable</p>	

Imberhorne Behavioural Sanction List	
This is a general guide of incidents which will need to be investigated and the sanction will be fair, reasonable, and proportional to the event	
Uniform	<ul style="list-style-type: none"> Worn out uniform (e.g. T-shirts, trousers etc.) No letter from parent / carer B1 Behaviour point - Persistent Detention
Personal Devices	<ul style="list-style-type: none"> Non uniform (e.g. hoodies, track suits, jumpers, track tops) B1 Behaviour point Confiscated for the day and taken to pastoral office, if repeated confiscated for weeks, up to student to collect
Social Media	<ul style="list-style-type: none"> Appearance (e.g. shirt length, jewellery, make up, nail polish / varnish) B1 Behaviour point - Provide student with make-up wipe or nail polish remover. Persistent - Detention
Operation	<ul style="list-style-type: none"> Use of Mobile Phones/Smartwatch/Ear Pods/Personal Electronic Devices B1 Behaviour point First time seen - Confiscated - student collects it from the pastoral office at the end of the day. Second time seen - confiscated - Parents/carer collect at the end of the day from reception. Third time - confiscated - held in the school office until the end of the week. Parents to collect B3 Behaviour point - Detention, teacher to contact home
Material	<ul style="list-style-type: none"> Inappropriate use of school computers B1 Behaviour point Inappropriate use of technology/social media B1 Behaviour point Loss of equipment B1 Behaviour point General (pen, pencil etc.) - B1 Behaviour Point Subject specific (e.g. calculator, PE kit) - B1 Behaviour Point Persistent Detention Loss of homework / unacceptable homework B1 Behaviour point. Persistent B2 Behaviour point - Detention and subject teacher to contact home. Continued persistent - LCP, to contact home. Late to school B1 Behaviour Point Late to lesson B1 Behaviour Point Poor work quality / Craft in books B2 Behaviour Point - after school detention, work is redone in detention Inappropriate behaviour in toilet / two or more in one cubicle B1 Behaviour point
Material	<ul style="list-style-type: none"> Capable/lighter / e-cigarette / association with wearing B1 Behaviour point Including smoking / vaping of any kind B1 Behaviour point Legal substances / offensive weapons B1 Behaviour point
Sanction	<ul style="list-style-type: none"> Disruption in lessons B1 Behaviour point. Persistent B2 - Detention Refusal to follow instructions B1 Behaviour point. Persistent B2 - Detention Working away from member of staff B1 Behaviour point Swearing / inappropriate comments B1 Behaviour point Taunting/teasing B1 Behaviour point Leaving school site B1 Behaviour point
Aggressive behaviour	<ul style="list-style-type: none"> Out of bounds during break and lunch times B1 Behaviour point Dangerous / unsafe / running inside B1 Behaviour point Aggressive behaviour / football / play fighting B1 Behaviour point Fighting B1 Behaviour point By stander / encouraging dangerous behaviour B1 Behaviour point Unprovoked attack B1 Behaviour point Harsh language / physical contact / bullying / discriminatory / racism B1 Behaviour point Harsh sexualised behaviour including that of harassment B1 Behaviour point Theft B1 Behaviour point

Structure of the day

- 08.35 - Warning bell
- 08.40 - Form time
- 08.55 - Lesson 1
- 09:55 - 5 Minute Movement Time
- 10.00 - Lesson 2
- 11.00 - Break
- 11:20 - 5 Minute Movement Time
- 11.25 - Lesson 3
- 12:25 - 5 Minute Movement Time
- 12.30 - Lesson 4
- 13.30 - Lunch
- 14:05 - 5 Minute Movement Time
- 14.10 - Lesson 5
- 15.10 - End of school day
- After school - Clubs

Extra Curricular Activities



CLUBS
SUMMER 2025

Key Stage	Activity	Site	Venue	Day	Times	Year groups	Staff
All	Athletics Club	IL	ATF/Field	Wednesday	3.20-4.30	ALL	PE Staff
All	Badminton (up to half term only)	IL	Sports Hall	Friday	3.15-4.15	All	GCR
All	Imberhorne Choir	IL	118	Tuesday	3.30-4.30	All	APH
KS3	Art Club	WL	7	Friday	1.30-2.05	9	KMI
KS3	Art Club	WL	7	Tuesday	1.30-2.05	7,8	KMI
KS3	Bananagrams	WL	Library	Friday	1.30-2.05	7,8,9	TBR
KS3	Basketball Club	WL	Sports Hall	Friday	3.20-4.20	7,8,9	Storm Basketball Club
KS3	Code Club	WL	49	Friday	1.30-14.00	7,9,9	NSA
KS3	Cricket (Boys)	WL	Nets	Tuesday	3.20-4.20	7	DMR
KS3	Cricket (Boys)	WL	Nets	Tuesday	3.20-4.20	8	DCE
KS3	Cricket (Boys)	WL	Nets	Tuesday	3.20-4.20	9	SHI
KS3	Cricket (Girls)	WL	Field/Nets	Tuesday	3.20-4.20	7,8,9	CMU
KS3	Crochet	WL	13	Thursday	1.30-2.00	7,8,9	SAL
KS3	Drama Club	WL	Drama Studio	Friday	3:15-4:15	7,8,9	JWT
KS3	KS3 Band	IL	118	Wednesday	3:30-4:30	7,8,9	EMO
KS3	MFL Film Club	WL	43	Tuesday	1.30-2.00	7,8,9	HWE/NMA
KS3	Mixed sports (lunch time)	WL	Sports Hall	Wednesday	1.30-2.00	7,8,9	AMC
KS3	Mixed sports (lunch time)	WL	Sports Hall	Thursday	1.30-2.00	7,8,9	VPR
KS3	Polish Club	WL	17	Monday	1.30-2.05	7,8,9	AFE
KS3	Pride	WL	43	Thursday	1.30-2.00	7,8,9	HWE
KS3	Rounders Club	WL	Field	Tuesday	3.20-4.20	7,8,9	VPR/EWO
KS3	STEM	WL	17	Wednesday	3.10-4.10	8,9	AFE
KS3	Technician Club	IL	Di Gasson	Monday	3:30-4:30	7,8,9 (Sign Up Sheet in Lesson)	GDO
KS4	Book Club	IL	79	last Wednesday of each month	1.20-2.05	10, 11, 12, 13	AJO
KS4	Cricket Club	IL	Sportshall	Wednesday	3.20-4.20	10	NCO
KS4	Duke of Edinburgh's Award - Bronze	IL	Sixth Form Common Room	Wednesday	3.30-4.30	10	CHA
KS4	English Language Revision (until Summer Exams)	IL	70	Tuesday	3:15-4:10	11	AJO
KS4	English Lit Revision (up to half term)	IL	404	Thursday	3.15-4.15	11	SHA
KS4	Health and Social Care Catch up/Homework Support	IL	84	Thursday	3.10-4.10	10, 11, 12, 13	SCO
KS4	History revision & catch up	IL	70	Monday	1.20-2.00	10,11	JSW
KS4	KS4 Year 10 Band	IL	118	Friday	3:15-4:00	10	EMO
KS4	KS4 Year 11 Band	IL	118	Tuesday	1:30-2:05	11	RWI/GDO
KS4	Rounders Club	IL	Field	Tuesday	3.20-4.20	10,11	JWE



Uniform



Imberhorne School Uniform

PLEASE SEE UNIFORM CHECKLIST

Trousers

Plain black and regular. Trousers should not be tight from hip to ankle, nor should they be of a puffy or shiny style/material.



Polo Shirt

Imberhorne shirt to be worn at all times with no other clothes visible underneath.



Jumper

Imberhorne jumper to be worn on top of the polo shirt. It can be taken off but not worn around the waist or shoulders.



Hoodie

Imberhorne hoodie to be worn on top of the polo shirt and jumper. It is not to be worn without an Imberhorne jumper underneath.



Black tailored shorts



Skirts (Optional)

Imberhorne school skirt which carries the school logo above the hem to be worn at knee length.



Shoes & Socks

Plain black polka-dot shoes. Must have black socks and no visible white legs. No boots, platform, or buckled shoes. Plain black socks or tights.



Make-Up & Nail Varnish

Students should not wear nail varnish / eyeline etc at either key stage. KS4 students may wear a discreet amount of make up.

Jewellery

One small stud in each ear lobe. No additional piercings or jewellery allowed.

Hair

Must be a uniform style, not shaved or cut very short. Lines cut into the hair are expressly forbidden. Dyed hair must be discreet and natural in appearance.

**Strive
Support
Succeed**



Uniform



Imberhorne School PE Kit

PLEASE SEE UNIFORM CHECKLIST

GIRLS		BOYS
Imberhorne Training Top <small>(White polo or base layer can be worn underneath)</small>		Imberhorne Rugby Shirt
Imberhorne Football Shorts <small>ONLY WORN BY GIRLS</small>		Imberhorne Rugby Shorts <small>ONLY WORN BY BOYS</small>
Imberhorne Football Socks		Imberhorne Football Socks
Footwear <small>Plain White socks Trainers: Navy, Black, Grey or White Must not have a black sole Football/Rugby boots</small>		Footwear <small>Plain White socks Trainers: Navy, Black, Grey or White Must not have a black sole Football/Rugby boots</small>

Unisex Plain White Polo Shirt

STRAPS - SHIN PADS, KUM SHIELD, NAVY SPORTS LEGGINGS AND NAVY BASE LAYER (OPTIONAL) DURING WINTER.
NO JEWELLERY TO BE WORN AND LONG HAIR MUST BE TIED BACK

**Strive
Support
Succeed**



Equipment

Strive
Support
Succeed

 **KS3 Equipment List**
Essential

- ☐ 2 black biros
- ☐ 1 green biro
- ☐ HB pencil
- ☐ 2B pencil
- ☐ Coloured pencils
- ☐ Rubber
- ☐ Sharpener*
- ☐ Pritt stick or other glue
- ☐ Fine liner
- ☐ Ruler
- ☐ Protractor
- ☐ Scientific calculator
- ☐ Named water bottle
- ☐ Standard headphone jack (3.5mm), can be headphones or earphones but cannot be wireless

*We recommend the Swordfish Combo Pencil Sharpener Eraser.



Mobile Phones

- Mobile phones and any other connected devices and gadgets eg airpods, are NOT allowed to be used in school.
- They can be brought to school, turned off before you enter school and placed in bags or lockers.
- Phones seen or heard will be confiscated.

Strive
Support
Succeed



Homework

- Teachers provide homework to support students learning. This will often follow class topics or future projects
- We have homework set through Bromcom.
- Get ready for homework with a space and time in the day to do this. It will prepare you for future exams and studies

Strive
Support
Succeed



School Buses

- Staff will oversee the loading of buses every afternoon.
- Year 7s are always asked to sit downstairs in the first term.
- West Sussex are responsible for bus allocation. Support in school, if required, will be given by Mrs S Cook.



Strive
Support
Succeed



**How parents
can help...**

Organisation

Have a copy of their timetable on the fridge. Note when PE/Food days are

Ensure they are equipped to learn.

Develop homework routines. Have a set time and a desk or table in which they can do their homework.

Look in their school bags – what is or isn't in there!

**How parents
can help...**

Culture

Attendance

Behaviour

Punctuality

Uniform

Jewellery

How parents can help...

Reading

Build reading time into the home
schedule

Have a family bookshelf

Read together and discuss
different books you are reading

Additional reading around
homework and current subject
topics

Regular visits to the local library

How parents can help...

Wellbeing

Share any concerns with your tutor

Support healthy routines (Exercise
and healthy diet)

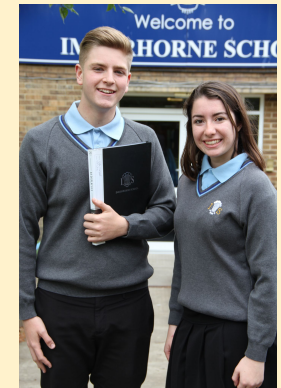
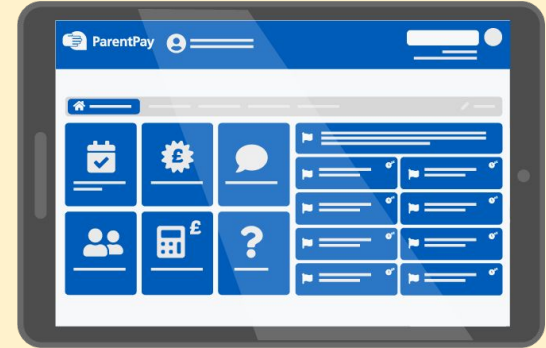
Clear bedtime routines

Monitor screen time and online
activity closely

You are the expert!

Other Information

- School canteen – how our cashless system works.
- Accounts can be topped up on ParentPay.
- Lockers – information will be given at the start of term. Students can make use of a locker - payments are made through ParentPay.
- Uniform- SWI



THANK YOU FOR YOUR ATTENDANCE

Strive
Support
Succeed

